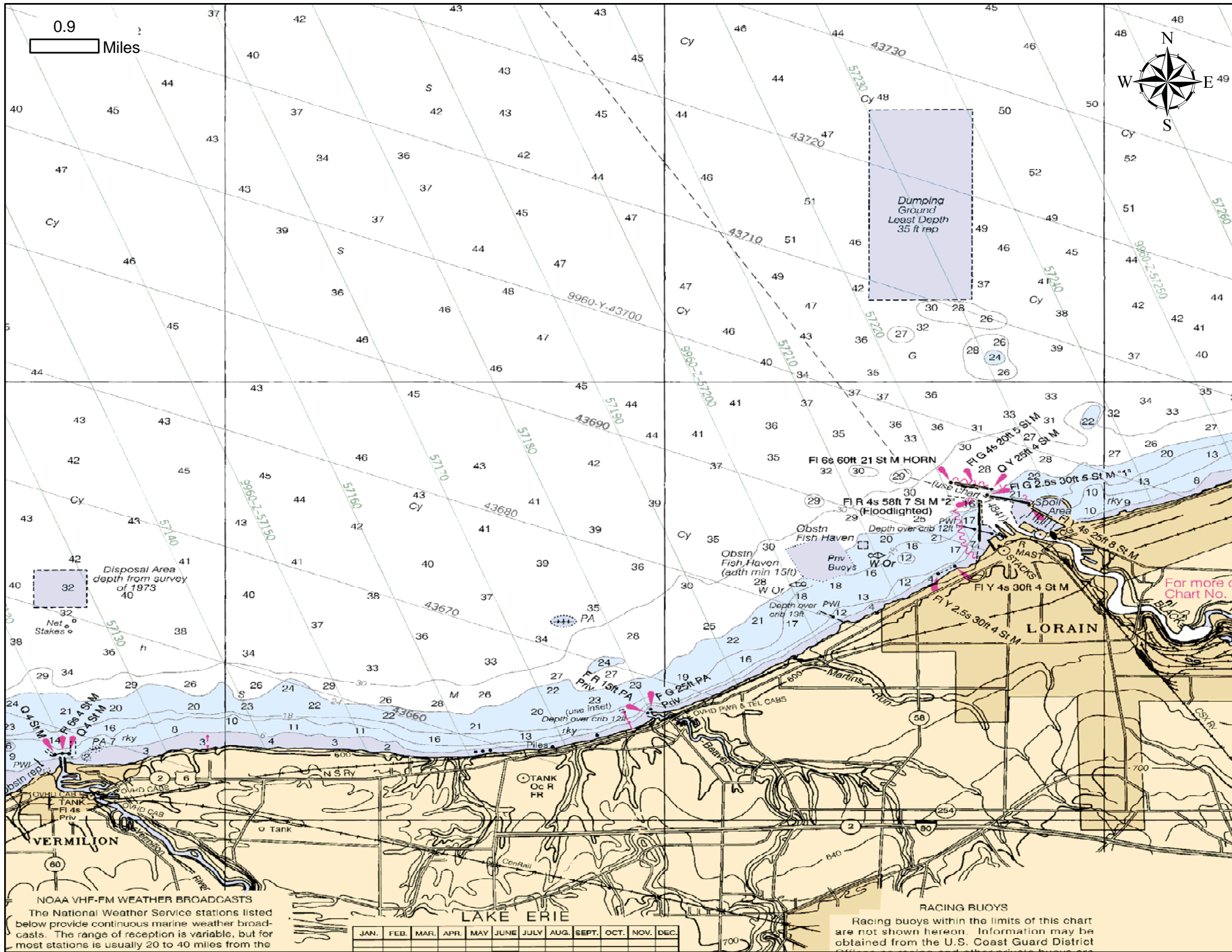
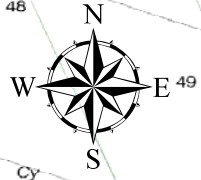


0.9 Miles



Disposal Area
depth from survey
of 1973
40

Dumping
Ground
Least Depth
35 ft rep

For more
Chart No.

NOAA VHF-FM WEATHER BROADCASTS
The National Weather Service stations listed below provide continuous marine weather broadcasts. The range of reception is variable, but for most stations is usually 20 to 40 miles from the

JAN.	FEB.	MAR.	APR.	MAY	JUNE	JULY	AUG.	SEPT.	OCT.	NOV.	DEC.

RACING BUOYS
Racing buoys within the limits of this chart are not shown hereon. Information may be obtained from the U.S. Coast Guard District